

Institution: University of Central Lancashire
Unit of Assessment: 25 Area Studies
1. Unit context and structure, research and impact strategy

Overview:

The Institute for the Study of the Asia Pacific (ISAP), which defines the over-arching structure of research strategy for UoA25, is one of the few research hubs in the UK dedicated to original interdisciplinary study of the Asia Pacific region. It creates **an exciting environment for inter- and multi-disciplinary research**. Although diverse in coverage, research members of the team share strong disciplinary identities, with the foci on the Humanities and Social Sciences. An emerging area for the University of Central Lancashire (UCLan), since 2013 the number of researchers has grown from one to 13 FTE, including five early career researchers. This has **enabled, for the first time, a submission to the REF**.

UoA25 has developed many strengths across relevant research fields and in some cases created unique regional identities. For example, **Alsford** is the United Nations Country of Origin Expert for Taiwan in the International Refugee Rights Initiative (IRRI) and oversees the Pacific Islands and North Korea at AMERA. **Smith** pioneered North Korean studies before leaving UCLan and this position has now been taken up and extended by **Lim**. **Lim** has directly informed policymakers in the UK, USA and South Korea, shifting the policy debate away from existing stereotypes of North Korea. While **Smith's** research successfully challenged stereotyped images of North Korea as a country, **Lim's** research informs recent changes in international development cooperation and the implications of this for North Korea. **Smith's** publication was referenced in the 2019 UN Human Rights Office of the High Commissioner Report (see sec. 4) and has raised public debate and understanding of the latest political developments in North Korea.

UoA25 plays an essential role in contributing to UCLan's research agenda. Currently, the University has six overarching research themes, and UoA25 is one of the main drivers for research conducted under the strategic research theme of "People, Place, Environment". This is evidenced by UoA members' active involvement in **the University Research Centre of Migration, Diaspora and Exile (MIDEX)**, which was established to respond to this strategic research theme. **Momesso** is the **deputy director of the Centre** and **Chang** is a **member of the steering committee**. **At a faculty level**, members of UoA25 have been identified as having an active engagement with research and are recognised as playing a vital role in its strategic plan. **The Faculty of Culture and Creative Industry (FCCI)** has two research academies: **the Arts and Humanities Research Academy (AHRA)** and the Academy of Creative Practices Research (CPRA). AHRA provides a structured context within which to encourage and develop interdisciplinary projects and initiatives addressing the University's core strategic research themes. In AHRA, **Zemanek** was appointed **the Associate Director** and **Alsford** and **Lim** are part of the **Board**. The involvement of these members in the Academy further nurtures and shapes the UoA's position in the University and directly influences the strategic direction that the University intends to develop. At school level, **Alsford** is Director of Research for **Humanities, Language & Global Studies (HLGS)**, a role that is critical in aligning the school with the research culture of the University.

In a statement issued in November 2019, the UK Council of Area Studies Associations highlighted the strategic importance of instilling a deeper knowledge and understanding of other countries, regions and peoples of the world. It argued that as part of the collective response to the post-Brexit challenges facing UK society, Area Studies departments throughout the UK Higher Education sector had a vital role to play. Viewed from these perspectives, **Asia Pacific Studies** at UCLan

Unit-level environment template (REF5b)

and most notably its **Institute for the Study of the Asia Pacific** is ideally placed to make a major contribution to the collective response to these future challenges.

i. Research strategy:

Our forward plan is based on actively generating and nurturing interdisciplinary research at three levels:

- (1) individual projects embedded in a core discipline, with findings illuminated from cognate fields
- (2) departmental collaborative research projects and interdisciplinary seminar series, workshops, and conferences
- (3) collaborative research involving researchers and non-academics beyond departmental networks, including regionally-, nationally- and internationally-based joint projects with a focus on the Asia Pacific.

This collaborative work has led to real-world impact. For example, **Alsford's** impact case study on cultural artefacts as cultural ambassadors is an ongoing project to utilise British collections of Taiwanese artefacts in collaboration with the British Museum (UK), the Shung Ye Museum of Formosan Aborigines (Taiwan), and the National Museum of Taiwan History (Taiwan). The collaboration with museums and curatorial professions has resulted in a positive enhancement of cultural heritage preservation.

ii. Unit context and structure:

The mission set out by **Alsford** in creating **ISAP** was to position the orientation of Asia Pacific Studies in a geostrategic arrangement that no longer looks to the West for geographical definition. It is an orientation that transcends the imagined boundaries of East Asia, Southeast Asia, and Oceania to encompass the region as an interconnected expanse with shared historical roots.

Under the Faculty of Culture and the Creative Industries (FCCI), **ISAP**, as an **umbrella institute**, consolidates the existing four institutes and centres of the Asia Pacific region — **International Institute of Korean Studies (IKSU)**, **The Northern Institute of Taiwan Studies (NorITS)**, **Northern England Policy Centre for the Asia Pacific (NEPCAP)**, and **The Centre of Austronesian Studies (COAST)** (see Figures 1 and 2). In 2021, **the Institute for Japanese Studies (IJS)** will be launched, and **the Institute for Southeast Studies (ISS)** and **the China Research Centre (CRC)** will be funded and established within the next five years.

The three pillars, **research, teaching and innovation**, offer a structural underpinning for all Institutes under **ISAP** umbrella. Given the complex political contexts and competition within the region, “country-based” research institutes are necessary in order to negotiate the political landscape and to further ensure maximum access to research funding for our three main clusters of study, namely South Korea, Taiwan, and Japan. Each institute and centre has a two-fold purpose: (1) to encourage the formulation of research agendas that transcend conventional disciplinary and geographical boundaries, and (2) to provide an international intellectual forum for the development of these agendas. Outcomes include both internally-organised or externally-collaborated conferences and publications (see below sections [a], [b]).

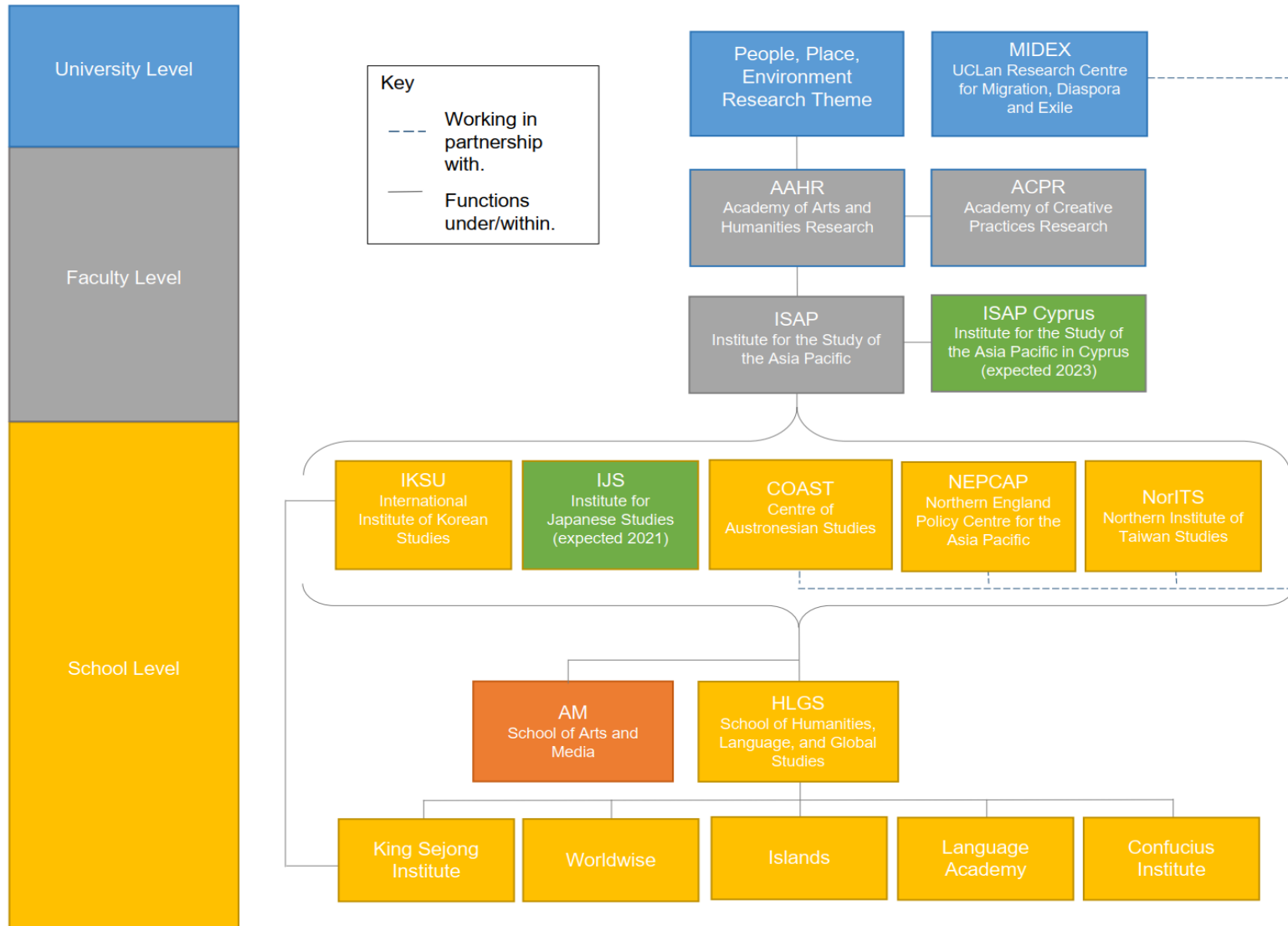


Figure 1: Unit Structure

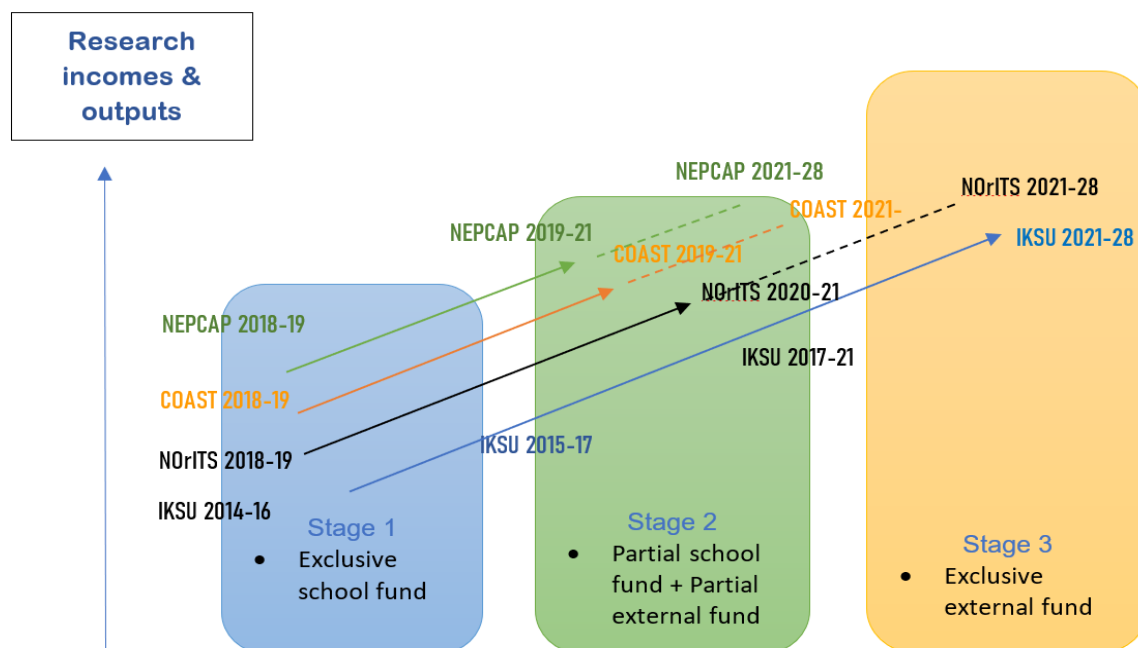


Figure 2: UoA25 Research Institutes & Centres Growth Chart 2014-28

The boundaries between these institutes and centres are deliberately permeable, and within UoA25 several colleagues contribute to more than one. Some have collectively constructed multiple research clusters which are shared across the UoA (see below sections [a], [b], [c], [d]). The strategic thinking driving the establishment of these research institutes and centres is two-pronged. The **research institutes (IKSU and NorITS)** are designed to be country-focused, whereas the **research centres (NEPCAP and COAST)** are thematically driven and designed to deliver research impact. This strategy allows the UoA to **capture external funds** to support our country-based research institutes (see sec. 3), which **maximises both internal and external financial resources** to support our thematic research centres.

[a] International Institute of Korean Studies (IKSU): established in 2014 as a multidisciplinary hub of research, teaching and public policy for the study of both Koreas, IKSU brings together Area Studies research expertise on global Korea. Collectively, members of IKSU produce coordinated high-quality research that **makes a unique social contribution** and **generates income or material donations**.

Focusing on the development of the Korean peninsula and the dynamic periphery, **Lim** has conducted pioneering research on the **development of North Korea, inter-Korea development policy, the international relations of North Korea, and North Korea defections**. Through her **frequent appearances across media platforms**, her personal insights into the political affairs of the Korean peninsula have made an important contribution to society (see sec. 4). A research project, **supported by a grant (£9,676) from the Academy of Korean Studies (AKS)** (see sec.3), focuses on **the engagement of North Korea in the United Nations' Sustainable Development Goals accountability process as a fragile state**. **Hyun and Alsford** have directed their attention to the politics of the two Koreas. For instance, **Hyun** examines the **mass mobilisation and the democratic transition of South Korea** in several of her publications (e.g., a monograph on South Korean student movements in the 1980s, and a journal article comprising a comparative case study of mass mobilisation in South Korea and France).

Unit-level environment template (REF5b)

The representations of Korea and Korean culture is central to **Plaice's** research, which maps out **significant political events that are processed and reshaped through Korean popular culture**, and **Hyun's** research on Korean popular culture diffusion in Europe. **Kim** investigates **the migration and the settlement experience of diasporic Koreans** (including both Korean and Korean Chinese migrants) in Latin America, drawing specific attention to Korean migrants' entrepreneurship. Research and publication projects related to these research strands have made a considerable income contribution to the UoA (see sec. 3).

IKSU's expertise on Korean Studies is recognised through, for example, Co-Directors (**Alsford and Lim**) becoming **series editors of *Routledge Research on Korea*** (see sec. 4) in 2019. A ***Routledge Handbook of Contemporary South Korea***, edited by **Alsford and Lim**, is expected to be published in 2021 (see sec. 4).

Based on its accumulating research activities and awareness in the field, in June 2020, the institute was awarded a **five-year grant (£633,000) from the Academy of Korean Studies (AKS) and Ministry of Education of the Republic of Korea (South Korea) for its MA North Korean Studies and PhD Korean Studies** (see sec. 3). The prestigious award recognises IKSU's dedication to research and educational development. The large grant funds postgraduate scholarships, further strengthening UoA25's postgraduate research environment (see sec. 2).

[b] Northern Institute of Taiwan Studies (NorITS): launched in 2018, NorITS has become the principal driver of research on Taiwan in the north of the UK. NorITS's mission is to nurture the next generation of Taiwan scholars through an engaged research agenda coupled with strong research-based teaching. NorITS is now **the largest Taiwan studies research institute in the UK, comprising 5 FTE research active members specialising in Taiwan Studies** (of whom four serve/have served as elected board members in various European Taiwan Studies Associations). Each approaching Taiwan from different disciplinary angles, they have contributed to the development of a new narrative of Taiwan Studies by looking at Taiwan as a central and autonomous actor in the Asia Pacific region.

Major publications by Institute members include **Alsford's** five published monographs and **Momesso's** one monograph (in progress) on Taiwan (see sec.3). These publications address topics that range from critical appreciation of Taiwan indigenous artefact and cultural archives to investigations of cross-strait migrant families. In addition, NorITS's principal outputs focus on defining the landscape of Taiwan Studies. For instance, **Alsford** co-edits ***the Brill Taiwan Series*** with Harrison (University of Tasmania). In 2018, NorITS and IKSU collaborated in the organisation of an "International Workshop on the Landscape of Taiwan Studies and Korean Studies", and more than 20 established scholars in the field participated the event. It was funded by the Academy of Korean Studies (AKS) and the Taiwan Representative Office (TRO) in the UK (see sec.3). **This workshop has generated three significant outputs**: a special issue on Korea in *North Korean Review* co-edited by **Alsford** and Grzelczyk (Aston University) (published); a special issue on Taiwan in *European Journal of Asian Studies*, co-edited by **Alsford** and **Momesso** (published); and a co-edited book by **Alsford** and **Lim** offering a comparative analysis of Korean and Taiwan Studies (in publication). In 2018, NorITS hosted a second international conference, "The Invisible Within: Actors, Relationships and Activities in Chinese Migrant Families", jointly funded by Confucius Institute (CI) Conference Grants and the Association of Asian Studies (see sec. 3). The conference **led to the publication of a journal special issue *Journal Asia Pacific Viewpoint***: forthcoming), co-edited by **Momesso** and Isabelle Cheng (University of Portsmouth).

Since 2018, NorITS has regularly invited specialists and academics in Taiwan Studies to deliver public lectures or participate in roundtable discussions on developments relating to contemporary

Unit-level environment template (REF5b)

Taiwan's society and politics. All these sessions are open to UCLan students, further contributing to a **research-led teaching environment**. A number of the political discussions disseminated at these roundtables have been turned into policy briefs that are published digitally in our NEPCAP policy brief series (see below sec. [c]).

In order to build a dynamic environment and facilitate cutting-edge research NorITS encourages **collaboration with non-academic individuals and centres**. With Openshaw, a photographer for the National Geographic, NorITS has undertaken a joint photographic documentary projects "Old and New Others of Taiwan: Indigenous People and New Residents," which was incorporated into the 2019 exhibition of "Brilliant City Symposium - Viewpoints from the Chinese Mega City". This collaboration, jointly funded by CI, MIDEX and NorITS, also **demonstrates a collegial and supportive working environment across the University**. Currently, NorITS members are engaged in formulating a large-scale project: "Mapping Taiwan Civil Society in Europe", for which funding has been sought from the Taiwan Foundation for Democracy (see sec. 3). Led by **Zemanek**, the project involves the Taiwan Corner based in Denmark. It seeks to establish a dialogue between civil society actors, politicians and academic researchers of Taiwan's public diplomacy. The inclusive and diverse profiles of our collaborative partners highlight the **premium placed on research and development in our UoA**. The success in obtaining funding highlights the **ability of Institute members to collaborate effectively in securing external research grants**.

[c] Northern England Policy Centre for the Asia Pacific (NEPCAP): NEPCAP plays an essential role in consolidating on-going research initiatives and translating them into a format which directly impacts on society and policy. NEPCAP's objectives are to **maximise the policy and practical impact**, and to **create an open research environment that facilitates the distribution of research outcomes amongst external stakeholders, governments and communities**. Formerly chaired by **Lim** and currently chaired by **Souza**, NEPCAP organises issue-oriented roundtable discussions. Since 2018, NEPCAP has worked closely with IKSU and NorITS to host roundtable series (3-4 sessions per year), which explore themes relating to contemporary politics in the Asia Pacific. These roundtables include: "Linking the Academic Research into Policy and Practice: North Korea and Beyond" (2018), "Taiwan – Post-election Roundtable" (2019), and "The Role of Social Media in Shaping (Un)Democratic Process" (2020). The **inclusion of diverse stakeholders** – academics, policymakers / practitioners, activists, media, think-tanks, students and the public – has been a major factor contributing to the success of these events. For instance: (1) the "UK Secondary Education and Korea", which discussed the role and feasibility of Korean topics being included in UK Secondary Education curricula, was very well received by the public. **The success of this event prompted the organisation of a second roundtable on the same topic in 2019 in London, jointly held with the Korea Education Centre at the Embassy of the Republic of Korea.** (2) "The Role of Social Media in Shaping (Un)democratic Processes" (March 2020), captured the research-informative and public-engagement goals to which NEPCAP aspires. The event included a half-day workshop led by social media critics and practitioners, which delivered practical skills in identifying social media's functions that fashion socio-political polarisation via (un)democratic means. Led by **Momesso** and supported by **Chang, Griffith, Souza, and Zemanek**, **this collaborative project secured a £10,000 grant from Research England** (see sec. 3). It also **strengthened NEPCAP's public outreach by bringing together non-academics (BBC journalist, China-focused think-tank speaker, activist/documentary film maker, and a fact-check organisation)**.

NEPCAP publishes 2-4 open access **policy briefs** per annum. Along with IKSU, NEPCAP provides **online feedback sessions for authors** to ensure that we reach out to the public and are

Unit-level environment template (REF5b)

able to track the impact of our publications and events. NEPCAP also publicises **UoA staff members' contributions to *The Conversation***, which has significantly increased our **Open Access research exposure**. Over the last five years, the number of publications has grown six-fold: from a single publication in 2016 to six publications in 2019. In particular, the number of reads of these articles has risen over the last three years, from roughly 18,000 (2018) to 34,000 (2019). And with the latest two published articles in July 2020 alone cumulating another 48,431 reads. In short, NEPCAP publicity has been **notably efficient in disseminating our UoA's research and achieving widespread public engagement**.

[d] The Centre of Austronesia Studies (COAST): chaired by **Alsford**, COAST seeks to facilitate research exchanges among Austronesian-speaking nations. Three identified research themes – **cultural heritage, linguistic heritage, environment and displacement** – contextualise the Centre's main research clusters, and respond directly to the University research theme, "People, Place and Environment".

Between 2018-2019, COAST strategically focused on organising public lectures delivered by academic and non-academic specialists in media and digitised forms of preservation of Austronesian cultural and linguistic heritage. The two main goals of this strategy are: (1) to consolidate research collaboration within ISAP and (2) to strengthen international collaboration with COAST's established networks. In collaboration with Preston's Harris Museum and Communities Fiji Britain, in 2019 COAST held the first "Fijian Gospel, Chants, and Dance Performances" in Preston. This was timed with "Woven Austronesia" (2019), an exhibition curated by **Alsford**, and held in the PR1 Gallery with artefacts held at Burnley's Gawthorpe Hall, and digital images from the Archives & Special Collections at SOAS and the British Museum.

2. People

Researcher development:

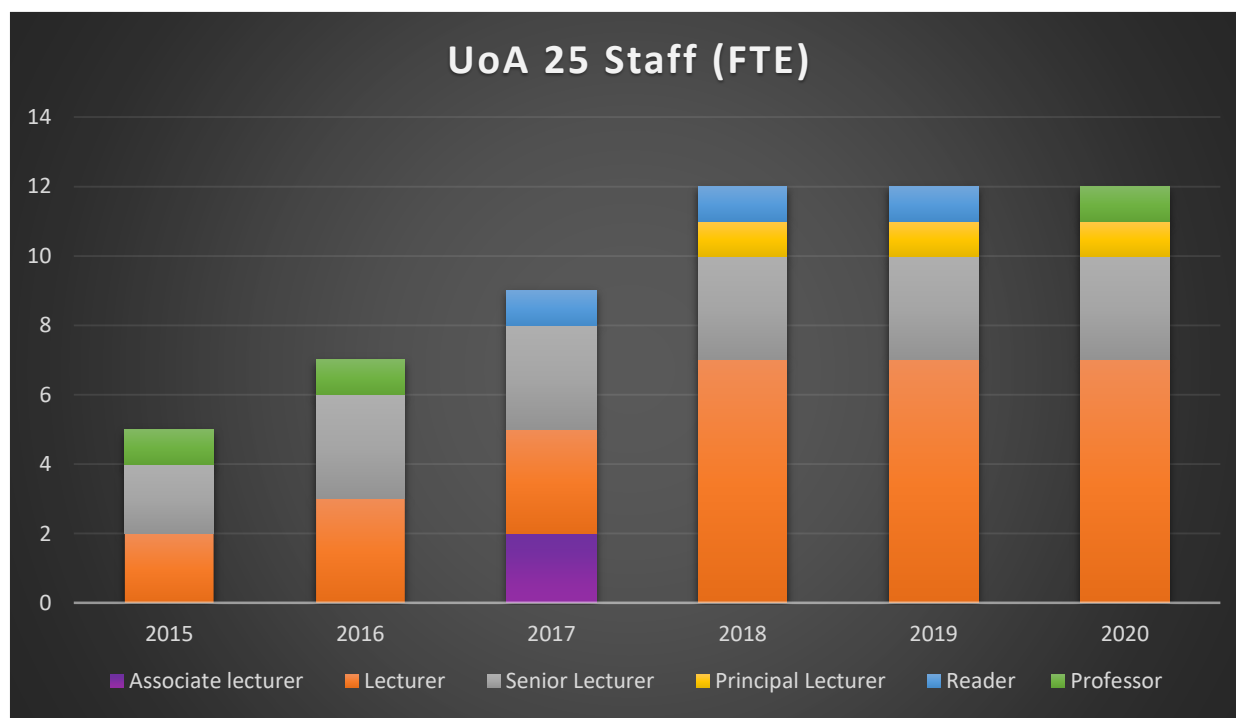


Figure 3: UoA25 Staff Growth

i. Staffing strategy and staff development:

Support for early career staff includes mentoring and a biannual appraisal in which short-term and mid-term objectives and deliverables are set, impediments to successful research are identified and further feedback and guidance are provided by more experienced colleagues. Since 2018, UoA lead, **Alsford**, has introduced a **monthly open-door policy**, which encourages all research staff to drop in and discuss their current and prospective research plans. A collegial and supportive atmosphere has been established and colleagues meet regularly to discuss their research and grant applications.

In 2019, APS at UCLan inaugurated the **Northwest England Research Buddy Network for Asia Pacific Studies**, which mobilises research staff, particularly ECRs (including PhD students and junior lecturers), to liaise with other regional specialists in the UK Northwest. In November 2019 a first **Research Away Day** was organised, which facilitated the development of joint research projects with other universities (Leeds, Liverpool, Manchester and Lancaster). Attendees at the meeting advocated holding two Research Away Days per annum, on a rotating basis in different universities. An agreed objective for future meetings is the inclusion of developmental schemes for ECRs, especially workshops and webinar sessions to consider grant applications.

Finally, **senior staff have supported ECRs to contribute to REF2021 preparatory work, and to take institutional director roles**, thereby helping the team to put in place a more dynamic and inclusive research strategy for the development of Asia Pacific Studies. Currently, an ECR (**Chang**) is the REF environment lead, and another ECR (**Souza**) is the chair of NEPCAP. These

Unit-level environment template (REF5b)

roles have significantly enhanced their research coordination skills and helped promote the development of their career trajectories in the UK academy.

FCCI has over the REF period operated a sabbatical scheme, which enables **up to 10 researchers per year across the faculty to take a one-semester sabbatical leave to focus on their research work**. Making sabbaticals available to all FCCI academic staff, regardless of status, offers major opportunities for lecturers in early stages of their careers to accelerate their research progress. Between 2018-2020, **seven members (Chang, Constable, Hyun, Lim, Liu, Momesso and Plaice) of UoA25 have been supported to take sabbaticals, three of whom (Chang, Plaice and Momesso) were early career researchers**.

School and Faculty research funds: Every year FCCI distributes approximately £40,000-£50,000 research funding to support research projects and activities, including PGR projects. These funds are accessed via a competitive application process, managed and peer reviewed through the FCCI Research Strategy Group. Each member of academic staff can apply for research funding up to a maximum of £1,500 per year. These funds, averaging £750 per person p.a., are mainly used to facilitate conference paper presentations, publishing costs or fieldwork. UoA25 staff have been exceptionally active in making such applications. Between 2018 and 2020, eight staff (**Chang, Hyun, Kim, Lim, Liu, Momesso, Plaice, Zemanek**) sought funding and almost all of them were granted a sum greater than the £750 average. These grants also prioritise the applications of relatively junior academic staff, which in turn, assist them to develop their career paths.

Equal Opportunities: UCLan was awarded **Athena SWAN** Bronze Status in 2014 for its work to address issues of **gender and diversity within Higher Education**. Respect for gender and diversity in staff recruitment is central to the staffing strategy of UoA25. A distinctive feature of our research unit's culture is the diversity of our international profile, as well as gender equality within the staff. Since 2013, the number of full-time staff has increased from one to 12, **comprising seven female and five male research staff members**. Of these full-time staff, five are from East Asia, four from the UK, two from the European Union, and one from Latin America, demonstrating **the diverse international profile of our research team**. Internal promotion of staff also reflects UCLan's commitment to the principle of equal opportunity. Eight internal promotions took place between 2017 and 2020: two to full-time lecturer positions, two to senior lecturer positions, one to principal lecturer and then to deputy head, and one to reader and then to professor. Of those promoted, two are female staff from South Korea, one is a female staff member from China, and three are male staff from the UK. **Half of the promotions awarded were female academics**, which demonstrates **UoA25's success in supporting the career development and progression of diverse staffing base**. In addition, during 2017-2019, having initially served one-year fixed-term contracts, nine out of ten fixed-term staff (six female and three male staff) were offered permanent contracts.

ii. Research students

Strategy for **recruitment of research students:** Asia Pacific Studies at UCLan stands out amongst other UK universities for **the significant scale of student recruitment for its BA (Hons) degree** (current annual intake is in excess of 110). This positive growth of UG recruitment over the last five years points to a major opportunity to **accelerate research-informed teaching at the UG level and further cultivate home-grown talents, with a long-term goal of expanding a sustainable PG research programme**. In 2018, the Asia Pacific Studies team initiated its PG programme with the launch of two MA degrees: MA in Asia Pacific Studies (MA APS), and MA in North Korean Studies (MA NKS). To ensure a healthy environment in which to seed the growth of future PG research, the focus of the current REF cycle has been to consolidate our UG home-

Unit-level environment template (REF5b)

grown student base and nurture them by offering research-informed elective courses (East Asia Pop Culture, Taiwan in the Asia Pacific, and Divided Korea) in the hope of subsequently recruiting them as PG students. This has worked well, between 2018 to 2020, 80% of successful applications to our postgraduate programme are students who have completed our UG degree. Furthermore, applications to our MA programmes have also increased threefold from 2018/19 to 2020/21. A major factor underlying our healthy retention rate is our unique research field of study, North Korean Studies, for prospective PGRs. Worldwide, UCLan stands out as **the only university outside the Korean peninsula that offers an MA in North Korean Studies**. Its uniqueness showcases **our UoA's capability to pioneer and foster a burgeoning field of study in area studies**. Three of our MA graduates in North Korean Studies have expressed their strong desire to further pursue a doctoral degree with us in this specialised area, and one of our APS MA graduates has begun her doctoral study on Pacific climate displacement in 2020/21 under the supervision of **Alsford**.

In terms of **nurturing our PG students' research environment and enhancing the quality of their research**, our programme organised many research-oriented events, including public lectures (e.g. "Filming Ethnofictions Around the World: From France to Taiwan, By Way of Japan"), writers' workshops (e.g., "Korean Literature Night on Contemporary Korean Literature - *The Hole*".) In addition, **recruitment of MA student helpers during the 2019 SoKEN (Social Sciences Korean Studies European Network) workshop** helped these students in drafting research proposals which were submitted to the 16th Korean Studies Graduate Students Convention in Europe 2020 (Paris, France). One of our MA student's proposals was accepted, but the event was postponed due to COVID-19. We secured grants to **fully cover the expenses for students to participate in an international conference hosted by the European Association of Taiwan Studies (EATS)**. In 2019, two BA students from our 'Taiwan in the Asia Pacific' module, took part in the 16th EATS Annual Conference in Nottingham. In 2020, four MA students and one PhD student were funded to attend the 17th EATS Annual Conference in Brussels. They were due to showcase their research projects with poster presentations, but this Conference was also cancelled due to COVID-19.

Support for postgraduate research students aims to realise their full academic potential from the beginning of their postgraduate careers. The **Postgraduate Research Student Induction** is compulsory for all postgraduate students, including both MA and Doctoral students. A variety of **Postgraduate Research Training Programmes** are offered centrally by the Graduate Research School, including **postgraduate career skills training** that is made available to final-year doctoral students. In the current REF cycle, three of the UoA 25 PGRs have completed their doctoral studies and two completed their MRes degrees. **Postgraduate students are eligible to apply for research funds** (£300 per person per year). In 2019, one doctoral candidate secured a grant that facilitated a research project presentation on Taiwan's Spanish colonial history at SOAS. Other support available from the research networks established by UoA 25 further strengthens the research environment for our PG students. For instance, with the guidance of NorITS staff members affiliated to EATS, the same student was successful for his EATS Library Grant application, using €500 funding to finance an archival research trip to Avila (Spain). Nurturing our PG research environment enabled one of our mature PhD students, who graduated in 2017 having worked on the relationship between North Korea and UN organisations, to pursue an academic path at KIMEP University (Kazakhstan). UoA staff are supported to develop their pedagogical skills in order to enhance the quality of supervisory work. All research staff are required to attend a two-day "supervisor training programme" and obtain a **Supervisor Training Certificate**. 12 of our current 13 FTE researchers have completed this training programme.

3. Income, infrastructure and facilities

Income:

During the current assessment period, UoA25 has generated £71,164 in direct research income. However, **approximately £542,000 in total was captured through a variety of external funding bodies** to support research- or cultural-related activities. All of this funding was captured after 2017, demonstrating an impressive financial growth within a short span of time. In addition to this externally generated income, a combination of donations of other kinds (e.g. Lady Rothermere's donation of 3,000 Korean DVDs; Korea Foundation's annual contribution of KRW3,000,000 to purchase Korean books) and disbursements of internally allocated funds have supported this UoA's research activities.

Diversity of Funding Bodies and Key Awards:

In addition to internal financial support, we have been able to secure regular external funding from diverse source including **The Korean Foundation, The Academy of Korean Studies, and the Taipei Representative Office**

The Korean Foundation (KF): KF primarily funds Korean culture-related events and festivals but, in promoting such events, also indirectly contributes to our research on Korean culture. Since 2018, a major KF-funded 'Lancashire Korea Festival' is held at UCLan annually, which showcases both contemporary and traditional Korean culture. This event has consistently attracted both Korean Studies scholars and the wider local public, and in 2019, more than 300 people attended the Festival. In 2019, the KF with the Embassy of Republic of Korea in the UK donated £77,000 to establish the first **university-hosted Korea Corner** at UCLan. The Corner is a space which promotes Korean culture, but its wide-ranging Korean book and film collection also serves as our UoA research repository (see below "scholarly infrastructures and activities"). **KF involvement also attests to the strength of our outstanding research in Korean film studies.** KF also contributed £17,400 to facilitate the organisation of the "8th Screen Culture Conference" (2018/19), by our UoA's Korean film specialist, **Plaice**. At this three-day conference, 45 academic papers were presented, as well as two film screenings (including a Q&A session with the film directors) and a keynote speech.

The Academy of Korean Studies (AKS): Since 2017, AKS funding has been made available on a regular basis and has helped finance the organisation of research-driven teaching events (e.g., thematic public lectures) and other culture- or research-related activities (e.g., international conferences, book projects). From 2017 to 2019, accumulated income of c.£35,000 was generated from funding provided by AKS, for example, supporting **Kim's** publication project on Korean Religious Communities in Brazil (see below, "Individual Research Grant Capture"). **Lim** secured **two major AKS grants for an academic conference and workshop**. The international conference ("The Landscape of Taiwan Studies and Korean Studies", 2018) was jointly funded by AKS (£6,240) and by Taipei Representative Office in London (see below). Both **Alsford** and **Lim** published **journal articles in a special issue in North Korean Review**. In 2019, AKS provided £6,118 to assist in the organisation of the first international workshop of SoKEN ("Korea at the Crossroads: Economic Development, Political Dynamics, and Social Changes in the Contemporary Korean Peninsula"). Two IKSU staff members (**Alsford** and **Lim**) have been appointed as the SoKEN Publication Committee members and will oversee publications generated by this conference. In 2020, **Lim** (the principal investigator) and other staff members of UoA25 (**Alsford**,

Unit-level environment template (REF5b)

Griffith and Hyun) were awarded a large five-year grant (£630,000) from the AKS. The grant is expected to provide 41 MA scholarships in North Korean Studies and four PhD scholarships in Korean studies, further strengthening and sustaining our postgraduate research development. It will also cover expenses for international conferences, summer school programmes and publication projects over the next five years.

Taipei Representative Office in London (TRO): TRO plays a key role in funding our activities. In 2018, TRO and AKS jointly funded the organisation of an international conference. The contribution made by TRO is an acknowledgement **of our UoA's major research contribution to Taiwan Studies** and also highlights **TRO's ambition to consolidate a Taiwan Studies research network in the North of the UK**. TRO has also been a regular source of smaller-scale funding (approximately £1,000 to £1,500 per year), which has assisted NorITS in organising various activities, including the screening of a Taiwanese film during the Asia Pacific Film Festival, and a "Cross-Strait Relations Roundtable" in 2018/19; the purchase of Taiwanese authors' novels for NorITS hosted literature event during the second Annual Taiwan Festival and the organisation of "Mapping Taiwan Civil Society in Europe Workshop" in 2019/20. These two events were subsequently affected by COVID-19, and are now postponed to 2020/21. TRO not only honoured its financial support but further agrees that NorITS can use this donation for any Taiwan-related research activities. Each year, TRO also underwrites a Taiwan Scholarship event at UCLan, which seeks to promote postgraduate and doctoral research programmes and scholarships in Taiwan for UK students.

Internal funding has also helped to pump-prime our research activity:

Confucius Institute (CI): CI-funded conferences have generated significant outputs for our UoA. In 2016/17, **Liu** secured £4,950 to support the making of a research documentary about student exchanges as a form of cultural diplomacy between China and the UK. In 2019/20, a £15,000 CI Conference Grant supported **Liu's** organisation of two international conferences: (1) the International Symposium on 'The Double-edged Effects of Brexit and its Impact on Sino-UK/EU Relations' (£5,000), and (2) the International Conference on 'The Comparative Perspectives on Public Diplomacy, Different Routes, Tools and Strategies' (£10,000). Unfortunately, both Conferences are currently suspended due to the travel restriction of COVID-19. In 2018/19, a CI Conference Grant of £5,000 awarded to **Momesso (and supplemented by** a further grant of £2,000 from the Inner Asia Council Small Grants), enabled her to organise an international conference on Chinese migrant families. This generated **a special issue journal publication by Asia Pacific Viewpoint (forthcoming)**, co-edited by **Momesso** and Cheng (Portsmouth University) – **inter-university collaboration** made possible by this academic event. Finally, in 2019/20, a £5,000 grant to **Plaice** supported organisation of a "Sino-Korean Screen Relations Symposium".

Research Centre for Migration, Diaspora and Exile (MIDEX): In line with its ethos to **foster multi- or inter-disciplinary research**, MIDEX promotes collaborative approaches with other funding bodies. UoA25 staff have been supported in a range of activities: In 2019, **Kim** received £2,000 to support her "**North Korean refugees in London**" project (cancelled due to COVID-19). **Zemanek** was supported to **host a Taiwanese visiting scholar** (Michelle Huang) at UCLan to conduct research on migration from Hong Kong to Taiwan (also impacted by COVID-19). **Chang** and **Momesso** received £3,700 joint funding from MIDEX and ISAP, to organise the "**2020 Taiwan Literature Festival: A Migrant Perspective on Taiwan's History and Memory**" (postponed to 2020/21 with virtual delivery). **Chang** with Reddick (UoA27) organised an international conference "**Anthropocene and Race**", which was jointly funded by MIDEX and ISAP (delivered virtually).

Unit-level environment template (REF5b)

This conference will lead to the **publication of interviews with the two invited keynote speakers (an eco-literature author and a poet)**. Finally, the NorITS team received £2,923 grant for **“Mapping Taiwan Civil Society in Europe”**. The first stage in this project was to organise an international workshop in May 2020 (delayed to October 2020). Though this workshop is mainly funded by the **Taiwan Foundation for Democracy (TFD)**, it is also supported by MIDEX.

King Sejong Institute Foundation: Hyun and Lim have successfully secured a grant of £20,000 from the King Sejong Institute Foundation. This facilitates the establishment of the Sejong Institute at UCLan in 2020, the only one in the UK outside of London. It generates an annual income of £20,000 - £40,000, which will cover the costs of administrative staff and support language teaching and cultural related activities. The Institute **further consolidates UCLan’s position as the hub of Korean studies in the UK**. With the dynamic cultural and language environment, it also helps to strengthen a healthy PGR environment and develop home-grown talent for future research in Korean studies.

Individual research grants:

UoA25 staff have generated significant external income for their research projects. Between 2013 and 2015, **Alsford** received a two-year grant of £154,350 from the Council of Indigenous Peoples and Shung Ye Museum of Formosan Aborigines for his archival documentation project on Taiwan Indigenous Peoples. In 2016, he received a \$USD 10,000 commission from the North American Taiwan Professors Association (NATPA) for his monograph publication, *A People’s History of Taiwan (tentative title)*. In 2018, **Lim** received \$USD 13,000 from the Academy of Korean Studies (AKS) for her project on “North Korea and the United Nations: Achieving the Sustainable Development Goals (SDGs) in the Context of Fragile State.” In 2019, **Kim** received \$USD 15,000 from the Academy of Korean Studies to facilitate publication of her research on “A Study on the Role of Korean Religious Communities in Brazil: Past and Present”, and another \$USD 8,000 for her project *From Sweatshop to Fashion Shop: Korean Immigrant Entrepreneurship in the Argentine Garment Industry* publication and distribution of book. The book project was affected by the COVID-19 pandemic, but the grant is extended to 2022. She also received \$USD 10,000 from the Argentine National Council for Scientific and Technical Research for another research project, “New Spaces of Interculturality: Jews and Koreans in the City of Buenos Aires”.

Momesso has benefited from various external funding sources in support of her research on migrant populations in Taiwan. From 2015 to 2019, she received 42,000€ from the Chiang Ching-kuo Foundation for International Scholarly Exchange Fellowship (2015-17), NT\$120,000 (£3,074) from Taiwan’s Ministry of Education for a Short-term Research Project in Taiwan (2016-17), and NT\$200,000 (£5,120) as a Taiwan Fellowship research grant. All these grants have significantly contributed to field research on cross-strait migrants in Taiwan, which was crucial to her monograph, *The Power of Emotions: On Marriage and Politics across the Taiwan Strait* (work in progress).

All the above-mentioned research publications by UoA members directly feed into both this and the next REF cycle and are evidence of **the sustainable publications profile of our research environment**. In addition, **Plaice** and **Liu** have each captured funding for their sabbatical research leave. **Plaice** from internal UCLan research funding; **Liu** from the external Leverhulme Small Research Grants.

Unit-level environment template (REF5b)

Scholarly Infrastructures and Activities:

Our UoA contributes extensively to UCLan's scholarly infrastructure and activities. In 2020, a total of 332,826 items (printed books and electronic books combined) relevant to the Asia Pacific Studies were purchased for the UCLan library collection. Below are some selected examples that are **classified by countries, regions and key research themes** in line with our UoA overall research agenda:

- **South and North Korea:** *Development and Society* (Seoul, Korea); *Journal of Korea Studies*; *North Korea Defence and Security Report*.
- **Taiwan:** *Taiwan Journal of East Asia Studies*; *International Journal of Taiwan Studies*.
- **China:** *Chinese Southern Diaspora Studies*; *Modern China Studies*; *International Journal of China Studies*; *China Population and Development Studies*.
- **Japan:** *Japan Studies Association Journal*; *Japan Forum* (Oxford, England; Online); *US-Japan Women's Journal*; *Journal of Japanese Studies* (Online).
- **Asia, Southeast Asia and Asia Pacific:** *Contemporary Southeast Asia*; *International Journal of Asia-Pacific Studies*; *Pacific Affairs*; *Pacific Review* (Oxford, England).
- **Australasia and Oceania:** *Archaeology in Oceania*; *Australasian Historical Archaeology* (Online); *Journal of New Zealand & Pacific Studies* (Online); *The New Zealand Journal of History*; *Oceania* (Online).
- **Indigenous Studies:** *Aboriginal History*; *Aboriginal Policy Studies: APS*; *International Indigenous Policy Journal*; *Australian Aboriginal Studies*.
- **Migration Studies:** *Asian and Pacific Migration Journal*; *Journal of Identity and Migration Studies*; *International Migration Review*.

Other archival databases are available to UoA staff to inform and enhance the overall quality of research, including China Academic Journals Database (CNKI), Korea Times Archive, Taiwan e-Learning and Digital Archive Programme, Cambridge Digital Library - Japanese Works.

In 2019, UCLan launched **the unique UK-based university-hosted Korea Corner**, winning a **special status conferred by the South Korean Embassy**. The Corner is a designated Korean cultural space housing literature, artefacts and other cultural resources. Public access is free, one of its goals being to promote language learning and increase knowledge of Korean culture within the Northwest regional community. The Corner received donations of more than 4,000 books and DVDs, which are a significant resource to inform and nurture future original research in Korean Studies.

4. Collaboration and contribution to the research base, economy and society

Social contribution:

- **Smith's publication of *North Korea – Markets and Military Rule (2015)*, is acknowledged and used in the 2019 UN research publication, *The Price is Rights: The Violation of Right to an Adequate Standard of Living in the Democratic People's Republic of Korea*, published by the Office of the United Nations High Commissioner for Human Rights.**
- **Alsford and Griffith's** podcast ("Ed & Niki on the Asia Pacific"), available via Spotify, Anchor, Radio Public and Pocket Casts, discusses contemporary events in the context of broader analysis of the region. The podcast showcases our **original and innovative approach to engaging in public discussion** of the current issues affecting the Asia Pacific region, and also demonstrates **our engagement to Open Access** of our research.
- **Lim's** recent research on inter-Korean state relations and the Korean Peninsula's diplomatic relationship with the US has elicited considerable media attention. She has taken part in many media interviews, including with the **BBC, Sky News, France 24 and Australian ABS**. IKSU encourages appearances such as these as an efficient means of public education and information about important issues in less familiar parts of the world.
- **Alsford** has begun a research project entitled: 'A Marshall-like Plan for the Development of North Korea', which gained support from the All-Party Parliamentary Group on North Korea in the UK Houses of Parliament.
- Members of NorITS host many public-facing events which bring our research knowledge to the Lancashire local area where knowledge about Taiwan is limited. The annual 'Taiwan Festival', for instance, reflects research themes such as **Taiwan's comic books and its soft-power diplomacy**, and **migration and diaspora representation in Taiwanese Literature**. Distinguished guest speakers and participants have included Lin Li-chin (award-winning Taiwanese comic artist), Wu Ming-yi (Man Booker Prize long-listed Taiwanese writer), and Shawna Yang Ryan (American Book Award winner).
- With Shung Ye Museum, COAST hosted "The Beauty of Indigenous Power" exhibition as part of the Lancashire Arts Festival in 2018, showcasing a selection of award-winning Indigenous Poster Designs from Taiwan at UCLan. The Gold Award artist, Fu-Ning Hsu, was invited to UCLan to receive her prize and deliver a talk to students and the public on the conceptualisation of her artistic creation. This event marked **the Northwest region's first contact with the Taiwanese indigenous art and culture**. (see. sec.1)

Collaboration with UK HEIs:

- **Lim** has co-written a book chapter with Fell (SOAS) on "Comparing Taiwan Studies at SOAS and Korean Studies at UCLan". The essay seeks to strengthen understanding of the development of area studies in the UK and raises awareness of our Korean Studies programme nationally and internationally.
- **Griffith** holds the position of Visiting Senior Lecturer in Asia Pacific Studies at the University of Leeds. Collaborative links with scholars both in UK universities in the Northwest (Leeds, Lancaster, UCLan) and overseas (in Europe, China and Japan) are highlighted in his forthcoming co-edited book, *Sino-Japanese Relations*.

Unit-level environment template (REF5b)

- **Zemanek** is developing the Northwest England Research Network for East Asian Studies, with participating scholars from Leeds, Manchester, Liverpool, Lancaster and UCLan. The first Research Away Day was held in November 2019.

Collaboration with Asia Pacific HEIs:

International partnerships with HEIs from the Asia Pacific Region have impacted positively on our research and teaching environment. Several of our partner institutes are top-ranking institutions that enjoy an international reputation for both their research and teaching.

- Among our Taiwanese HEI partners, **Alsford** has inaugurated a research project with the Centre of Digital Humanities at National Taiwan University, focusing on the British Museum's collection of Taiwan artefacts.
- NorITS and COAST are engaged in a collaborative project with researchers at National Taitung University on the Maritime Cultural Heritage that is embodied in Taiwan Indigenous Culture.
- As Chair of NEPCAP, **Souza** promotes research collaboration with the SCSTT that is endorsed by Taiwan National Chengchi University.
- Two partnership MoUs for joint collaborative research work in North Korean Studies have been signed: one with Kangwon Institute for Unification Studies at Kangwon National University, the other with Ewha Institute of Unification Studies at Ewha Women's University, both based in South Korea. These Korean partners have also facilitated research exchanges for our PG students.
- **Chang** has initiated our UoA's first contact with the International Innovation Centre for Indigenous Studies, based in IFUGAO State University in the Philippines. Discussions are underway about the possibility of conducting field research on endangered indigenous languages and cultures in the North of the Philippines.

Contribution to the research base:

- **Open access research base:** In 2018, IKSU created online platforms dedicated to **IKSU working papers** and "**Weekly Bilingual Briefs (English and Korean)**" about North and South Korea, which provide academics and specialists in Korean Studies with up to date information about current issues. Since 2018, NEPCAP also publishes and disseminates **Policy Briefs** in digitised format on its website.
- **Editorships:** Our staff participate in **editorships of multiple journals and academic forums** in East Asian studies, including: *BRILL Series in Taiwan Studies* (**Alsford**), *Routledge Research on Korea* (Series Editors: **Alsford** and **Lim**); *Discourse 201*, published by The Korean Association of Socio-Historical Studies (editorial board member: **Hyun**); *East Asian Journal of Popular Culture* (editorial board member and guest editor: **Zemanek**, review editor: **Plaice**); *World Journal of Social Science Research* (editorial board member: **Alsford**); *Asian Social Science* (editorial board member: **Alsford**); *Journal of Culture, History and Archaeology* (editorial board: **Alsford**); *Asian Institute of Research* (editorial board member: **Alsford**) and *Asian Social Science* (editorial board member: **Alsford**). APS staff also regularly **act as referees** for international journals and presses, including *International Journal of Taiwan Studies*, *Asian Ethnicity*, *European Journal of Asian Studies*, *Asian Perspective*, *Mainland China Studies*, *Japan Review*, *Japanese Studies*,

Unit-level environment template (REF5b)

Gender & History, *Monumenta Nipponica* (Asian Studies); *East Asian Journal for Popular Culture* (popular culture); *International Security* (international politics).

- **Handbook publications:** Our UoA has published two handbooks: *Handbook on Sino-Japanese Relations*, edited by **Griffith** (forthcoming); *Routledge Handbook of Contemporary South Korea*, co-edited by **Alsford** and **Lim** (forthcoming). Both promise to make a significant contribution to Area Studies teaching and research.
- **Learned societies:** APS staff assume significant responsibilities in various learned societies. **Alsford** (2012-2018), **Momesso** (2014-present) and **Zemanek** (2016-present) serve/served as elected board members of the European Association of Taiwan Studies (EATS); **Chang** (2016-present) is a board member of the Francophone Association of Taiwan Studies (AFET); **Momesso** is a research fellow at the European Research Centre on Contemporary Taiwan (University of Tübingen) (2011-13); **Lim** fulfils various roles in institutions related to Korean Studies: council member of the British Association for Korean Studies (BAKS), board member of the Korean Language and Culture Education Society (KLACES) and board member of the Korea Association of International Development and Cooperation (KAIDEC); **Alsford** (since 2017), **Lim** (since 2020), and **Plaice** (since 2015) are all fellows of the Higher Education Academy and **Griffith** is an associate fellow; **Alsford** has been a Nominated Fellow of the Royal Asiatic Society since 2013 as well as a Nominated Fellow of the Royal Anthropological Institute since 2019; **the UN Country of Origin Expert (Taiwan) for the International Refugee Rights Initiative (IRRI)** since 2015, and **AMERA International Country of Origin Expert (Taiwan, North Korea and Pacific Islands)** since 2020.
- **Doctoral examination:** UoA staff have examined PhD theses during the current REF cycle at the following universities: University of Leeds, UCL, SOAS, Goldsmiths, University of Reading, University of Edinburgh, St. Andrews University, and University of Rome (Italy).
- **Keynotes and invited lectures:** During this REF cycle, all members of staff have delivered public lectures in HE institutions based in the UK and elsewhere in Europe, including LSE, SOAS, University of Leeds, Manchester University, Brussels Free University, Jagiellonian University, Masaryk University, University of Vienna, Slovenia University, Geneva Centre for Security Policy, and EHESS in Paris.
- **Distinctions, awards and recognitions:** In recognition of his research on Austronesia, **Alsford** received the 'UCLan success in Research' award during the 2019/20 'Research at UCLan' event and was awarded a **Targeted Area Research Fellowship** by the **American Society for Theatre Research** in 2020.

This statement outlines the significant development of UoA25 over the REF2021 period, resulting in its first submission. The UoA's ambitious plans have resulted in a research environment that is increasingly vibrant and of international repute. Through support for research staff, students and infrastructure, the developments highlighted here will be sustained and will grow in the future towards a fully mature, world-leading Area Studies unit.